

Weberville Community Forest Association

Home of the Weberville Community Model Forest

Phase III Final Report

April 1, 2010 – March 31, 2011



ACKNOWLEDGEMENTS

Sponsors

FPIInnovations – Forest Operations Division
Agro-Forestry and Woodlot Extension Society (AWES)
Alberta Sustainable Resource Development
novaNAIT Boreal Research Institute
County of Northern Lights
Alberta Forest Extension Network (AFEX)
Alberta Agriculture and Rural Development
Daishowa-Marubeni International Ltd.

Supporters

Woodmere Nursery
Peace Valley Snow Riders Association
Alberta Conservation Association
Woodlot Association of Alberta

Board of Directors:

President:	Juri Agapow, FPIInnovations
Vice President:	Peter Harter
Treasurer	Doris Harter
Director:	Wendy Boggs
Director:	Tanya Nagy
Director:	Wayne Davie
Director:	Stan Jensen
Director:	Bonnie Hood
Advisor:	Owen Cook, Alberta Sustainable Resource Development
Advisor:	Doug Macaulay, Agroforestry & Woodlot Extension Program, Alberta Agriculture and Rural Development
Advisor:	Hugh Bailey, Alberta-Environment Services Branch, Agriculture and Agri-Food Canada

Staff

General Manager:	Lisa Ladd/Laddscape Contracting
Forest Technician:	Patrick Hiesl
Forest Technician Assistant:	Patrick Pflug

EXECUTIVE SUMMARY

The Weberville Community Forest Association arose from a pilot project initiated in 2008 to create a landscape level forest management plan on private land. This innovative, community-based approach to private forest land management is the first of its kind in Canada. Starting as a simple vision to increase the awareness of the environmental benefits of forested land, it has grown to include many other community-driven environmental initiatives.

The project arose from the cooperative efforts of the Doug Macaulay of the Agroforestry & Woodlot Extension Society (AWES) (a program under Alberta Agriculture and Rural Development), formerly called the Woodlot Extension Program, and Juri Agapow of FPInnovations (the world's largest forest research institute). Individuals from other organizations were recruited to form a planning committee; the novaNAIT Boreal Research Institute, Agriculture and Agri-Food Canada, and a student from the University of Applied Science (Rottenburg Germany). Other sponsors include; Daishowa-Marubeni International Ltd., Woodlot Association of Alberta, County of Northern Lights, Town of Peace River, Woodmere Nursery, and the Alberta Forest Extension Network (AFEX).

During Phase II, the Weberville Project registered as a non-profit society status in August 2009 under the name of the Weberville Community Forest Association. The WCFA is managed by the Board of Directors made up of eight Directors from the community plus three Advisors representing Sustainable Resource Development, Alberta Agriculture and Rural Development, and Agriculture and Agri-Food Canada. The Board of Directors meets monthly to discuss topics of interest and to organize activities. A General Manager is employed under contract part-time to manage the day to day operations of the WCFA and its projects.

Phase III saw the WCFA continue to develop more of its programs including tree planting, trail development, and woodlot inventories. A significant milestone was achieved in September 2010 when the WCFA became the 15th member of the Canadian Model Forest Network, under the name of the Weberville Community Model Forest. Since achieving Model Forest status there was a significant rise in local, regional, national and international support.

Projections for Phase IV focus on further developing the business cases surrounding woodlot inventories, carbon credit opportunities, and a network of trails in the area. Becoming a Model Forest also prompted the WCFA to re-evaluate its original geographical boundaries of the project area and to consider expanding its boundaries on a case by case basis. As a result, new initiatives have come to light outside the boundaries and will be explored during Phase IV.

VISION AND MISSION

The broad objective of the WCFA is to increase the social, ecological and environmental awareness of forest land in the community. Through a variety of activities, area residents are able to connect with their neighbours on related issues such as watercourse protection, biodiversity conservation, planting trees, alternative energy options, trail development, and other topics of interest to the community.

Since becoming a Model Forest, it has become necessary to clarify the relationship between the Weberville Community Forest Association (WCFA) and the Model Forest (WCMF).

WEBERVILLE COMMUNITY FOREST ASSOCIATION (WCFA)

Vision:

This vision of the WCFA is to promote woodlot stewardship and sustainable landscape management of private forest land in Alberta.

Mission:

The mission of the WCFA is to enhance woodlot management on private land by providing support to land-owners, land managers and others who influence land use practices in the Weberville area.

Objectives:

- Promote the awareness of economic, social and environmental implications of private forestland in Alberta
- Encourage landowner participation in sustainable woodlot management and agro-forestry
- Demonstrate integrated community land-use activities which recognize the values of forest resources.

WEBERVILLE COMMUNITY MODEL FOREST (WCMF)

Vision:

The vision of the WCMF is for landowners and other forest-based stakeholders in the Weberville and surrounding communities to recognize the social, economic, and environmental benefits of the forested landscape.

Mission:

The mission of the WCMF is to provide a working landscape reflective of the diverse interests and values of the private and public stakeholders for the purposes of demonstrating and promoting agro-forestry and sustainable forest management best practices and related research.

Objectives:

- Work with communities in and around the Weberville area to pilot innovative ideas, conduct research and develop integrated, multi-sector approaches to sustainable landscape-level forest management.
- Support actions for maintaining ecological integrity on the forested landscape.
- Provide communication and outreach activities which have demonstrable influence on stakeholders and the general public.
- Engage in collaborative activities with other model forests aimed at strengthening regional, national and international Model Forest Networks.

PHASE III WORK PLAN (April 1, 2010-March 31, 2011)

Phase III Work Plan (2010-11)	Estimated Timeline	
	Start	End
Pursue project funding and support	May 10	October 10
Conduct 3 rd round of private land inventories	June 10	February 11
Establish MOU with NAIT, AFEX, AWES	May 10	December 10
Tree planting initiatives	May 10	July 10
Establish educational opportunities with WOLF	May 10	February 11
Publish Private Land Forest Management Plan	August 10	October 10
Become Members of CMFN, attend meetings (Ottawa, Spain)	August 10	March 11
Create website, design new logo	November 10	March 11
Apply for awards & grants & support (Emerald Award, ASN Grassroots, RADF funding)	December 10	March 11
Participate in CMFN initiatives (climate change, research)	January 11	March 11
Annual report, meeting and project evaluation	May 11	
Community Outreach (demonstrations, activities, education)	Ongoing	
Report on progress to the community	quarterly	

EXTENSION ACTIVITIES

Many activities have taken place over the past three years by the WCFA in an effort to promote woodlot stewardship and sustainable landscape management of private forest land in Alberta. These efforts demonstrate the many benefits of integrated community land-use planning and exemplify the value of managing forests on private land. These activities include:

Board of Director Meetings:

Board of Directors met on the following dates during the 2010/11 term:

- April 18, 2010
- October 28, 2010
- May 20, 2010
- November 16, 2010
- July 22, 2010
- January 25, 2011
- September 14, 2010
- February 22, 2011
- September 25, 2010
- March 15, 2011

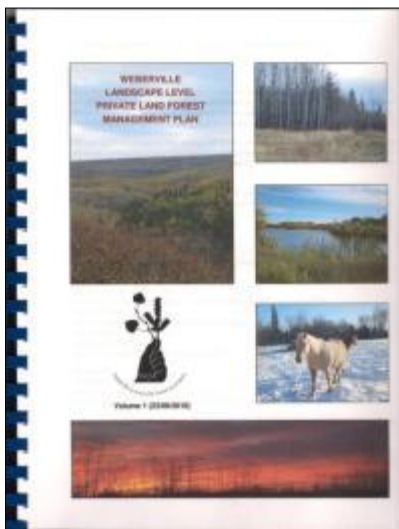
Annual General Meeting:

The WCFA AGM was held on May 20th, 2010 at the Bar 2A Ranch. Approximately 30 people were on hand to participate in the meeting and enjoy the BBQ dinner. Presentations were made by Hugh Seaton (novaNAIT Boreal Research Institute) and Dave Blackmore (Woodland Operations Learning Foundation) on the roles of their respective organizations in assisting the WCFA to achieve their objectives. The election of officers was followed by the first official meeting of the new Board of Directors. The officers from the previous 2009/10 year remained unchanged with the addition of one new Director, Bonnie Hood.

Forest Inventories

Patrick Hiesl, a German Forestry student, returned to the Peace Country to continue his work on the forest inventories in the Weberville Area. To date, over 42 quarter sections of private land have received a detailed inventory consisting of maps, forest stand data, detailed eco-site descriptions, and watercourse and wildlife features. This project is made possible directly through funding from the Alberta Forest Extension Network (AFEX).

German forestry student, Patrick Hiesl continued his work on private land inventories in the Weberville area



Woodlot Management Plans

To date 20 individual woodlot plans have been created which provide a specific management strategy for the woodlot to meet the objectives identified by the landowner. These extensive documents become the property of the landowner and are provided free of charge.

Landscape-level Private Land Forest Management Plan

After two years of data collection through inventories, the 60-page Weberville Landscape-level Private Land Forest Management Plan was published. The document includes detailed information on climate, geology, vegetation, soils, eco-sites, history of the forest, wildlife data, and other valuable information about the land base.

Trail Development

Over 10 miles of existing trails were upgraded to promote their usage and discourage random trail development, which may lack the appropriate environmental considerations. WCFA Directors, Stan Jensen and Wayne Davie, have played a primary role in scouting and clearing trails in the area. Plans are underway to formalize the trail system and implement a “code of conduct” for trail use.

Peace Valley Snow Riders

The local snowmobile charter of the Alberta Snowmobile Association established a working partnership with the WCFA to link their larger trail system with the existing trail system within the Weberville area. The group was eager to share its knowledge regarding trail system development, landowner permits, and appropriate signage.

Tree Planting

Several landowners in the Weberville Area participated in the tree planting project initiated by the Woodlot Association of Alberta and the Forest Resource Improvement Association (FRIAA). Approximately 10,000 trees were planted for a minimal charge on private land in the Weberville Community Forest core area.

Tree Cropping

A survey was sent out by the Agroforestry and Woodlot Extension Society to local landowners to determine their interest in a potential tree-cropping opportunity whereby landowners would grow 'super aspen clone' plantations on a 20-25 year rotation. The results are unknown at this time.

Agro-forestry Tours

On April 18th, the WCFA Directors toured a birch syrup operation in the Three Creeks area, northeast of Peace River. Participants learned how to select, tap, and process sap from a birch tree to produce birch syrup.

On August 7th, the Woodlot Association of Alberta in partnership with the Alberta Forest Extension Network (AFEX) held an Agroforestry Tour of the Peace Country. One of the stops for the 30+ visitors was at the Bar 2A Ranch which are the headquarters of the Weberville Community Model Forest and the site of the Forest 2020 plantation.

Community Forest Template

With its humble beginnings as a pilot project, the growth and development of the WCFA from a community forest through to a Model Forest, can serve as a template for other rural forested communities. One of the ultimate objectives is to have the WCFA template replicated in other communities throughout Canada to meet their environmental goals.

Board Meeting and Social Event

On September 25th, 2010 the WCFA Board of Directors and other invited guests enjoyed an afternoon BBQ and meeting in the outdoors. Participants rode horses and quads to the picturesque location on the Peace River valley.

Forest Stewardship course

Through the cooperative efforts of WOLF and AFEX, the WCFA was able to offer a Forest Stewardship course in February 2011. Unfortunately, there was not enough interest to meet the minimum 20 people required to cover the material costs of delivering the course.



WCFA Board members and guests enjoyed a scenic ride in the Peace River Valley on September 25th, 2010



Polar Bear Dip

WCFA members and supporters braved the cold by dipping in the partially frozen Peace River on December 11th, for a good cause. Fifty percent of the funds raised (approximately \$1500) goes to the WCFA for trail development and the remaining fifty percent goes to the Salvation Army Food Hamper program.

Brave polar bear dippers tested the icy waters of the Peace River to raise funds for trail development and tree planting in the Weberville area.

Junior Forest Rangers

The Junior Forest Rangers program is for teens interested in working in the forested landscape. The WCFA was fortunate to have the 'Jiffers' assist with trail clearing, forest thinning, and tree planting in the Weberville area during their 6-week summer term.

Climate Change Adaptation Project

The WCMF is one of four Model Forests selected to participate in a pilot project to test a guidebook written by the Canadian Forest Service. The guide is aimed at assisting forest-based communities to identify and address potential issues as a result of anticipated climate change effects. A proposal has been submitted but the project has not been initiated at the Model Forest level yet.

Carbon Credit project

The WCFA has been working closely with Brinkman and Associates in B.C. to develop a carbon credit project involving afforestation and conservation in the Weberville area. The project is in its early stages as the details are worked out and potential landowner involvement is finalized.

MEDIA AND PUBLIC RELATIONS

Newsletters & Reports:

WCFA Newsletters are produced four times during the year. Hard copies are mailed out to local landowners and key contacts and digital versions are distributed to a wider target audience. Newsletters are also posted on the WCMF website at www.wcmf.ca and on the Canadian Model Forest Network website at www.modelforest.net.

- May 2010
- August 2010
- November 2010
- March 2011



Website

The WCFA launched its website in October at www.wcmf.ca. The site provides up to date information on the WCFA and its projects, including the work of the WCMF, newsletters, and reports.

Facebook Page

The WCFA is keeping its members up to date by joining the social media network of Facebook.

Environmental Stewardship Award

On July 3rd, 2010, the WCFA was awarded the 2010 Grassroots Environmental Stewardship Award in recognition for its stewardship activities to enact positive environmental change in their community. Doug Macaulay was on hand to accept the award on behalf of the WCFA.

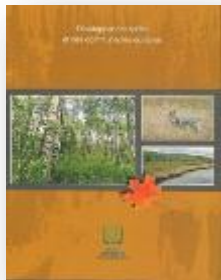


Alberta Emerald Award

The WCFA was nominated for an Alberta Emerald Award in February 2011. The nomination was made by Doug Macaulay on behalf of Agroforestry and Woodlot Extension Society (AWES). The prestigious Emerald Award is based on criteria which address environmental protection, commitment, innovation, and partnership. The WCFA was nominated as a finalist in the 'Community Group' category. The final decision and announcement will be made on June 15, 2011.

Forest Innovations Magazine

An article was published in the Forest Innovations magazine November 2010 issue about the WCFA achieving Model Forest status.

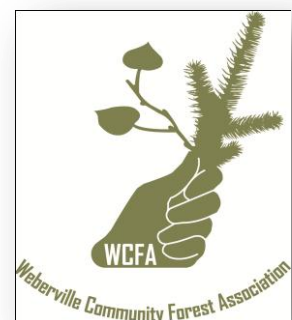


Developing Sustainable Forests and Communities - publication

The WCFA was included in the publication titled, 'Developing Sustainable Forests and Communities' which is produced by the Canadian Forest Service. The document serves to increase the profile of the CFS Forest Communities Program which includes many of the Model Forests. The document is published in English and French and free copies are available by contacting the WCFA.

New WCFA and WCMF logos

The new WCFA logo was designed by Peace River High School student, Ian Ladd, and was produced professionally by New Dimension Design. Two logos were released; one for WCFA and a similar but modified one for the WCMF. The logo depicts a number of elements which represent the WCFA; a hand to represent the people in the area, a spruce and aspen seedling to represent the diversity of the forests, and a system of roads, trails and rivers flowing through the fingers to represent the linear features of the area.



International Model Forest Network – Global Forum

The WCFA was welcomed as one of the newest members of the IMFN at the Global Forum on Sustainability held in Spain in March 2011. There, the WCFA President, Juri Agapow, and the WCFA General Manager, Lisa Ladd, were on hand to receive the poster-size certificate.



WCFA President, Juri Agapow, and General Manager, Lisa Ladd, represented the Weberville Community Model Forest while at the international conference in Spain.

International Symposium on Ecosystem and Landscape-level Approaches to Sustainability

The WCFA was represented at the “International Symposium on Ecosystem and Landscape-level Approaches to Sustainability and Global Forum” in Spain from March 21-26, 2011. President, Juri Agapow and General Manager, Lisa Ladd, were on hand to network with the over 350 Model Forest members and guests, from more than 60 nations. The event included workshops on various topics and Juri was selected to lead a discussion group on Ecological Goods & Services, while Lisa presented on Climate Change Adaptation to the larger audience. A poster session was also held during the Symposium and the WCMF poster was one of 39 posters selected.

NETWORKING & PARTNERSHIPS

Alberta Forest Extension Network (AFEX)

The WCFA signed a Memorandum of Understanding with AFEX in November 2010, becoming the fourth member of the network, joining the founding partners, novaNAIT Boreal Research Institute, Woodland Operations Learning Foundation, and FPInnovations.

The Vision of AFEX is to convey information on topics critical to managers and workers making decisions on forested land in Alberta. As a member of AFEX, the WCMF attends all AFEX planning meetings and assists with hosting seminars. Since becoming a member, the WCMF played a host and moderator role at the seminar titled, “Reclamation of small industrial sites” held in Grande Prairie (December 2010) and in Edmonton (January 2011).

AFEX has provided financial support through grants which fund the costs of hiring a forestry student to conduct inventories and create woodlot management plans.

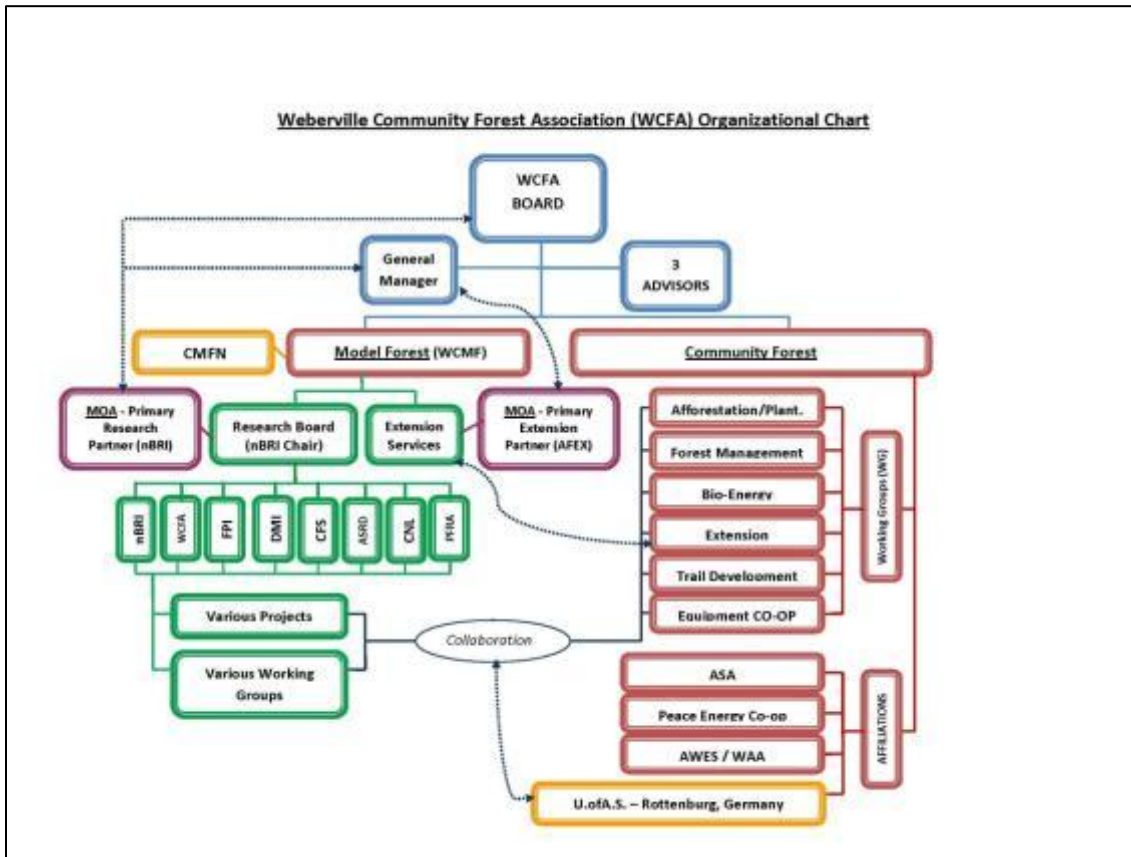


novaNAIT Boreal Research Institute

The WCFA entered into a Memorandum of Agreement with the novaNAIT Boreal Research Institute (nBRI) in October with the nBRI assuming the role as the Primary Research Partner. As such, the nBRI will organize and chair a Research Board in order to coordinate the synergies of like-minded research and development organizations for the advancement of the WCMF. In return, the WCFA received some much needed core funding dollars.

Research Board

With the support of the novaNAIT Boreal Research Institute, the WCFA has established the mission and objectives of the Research Board and has begun to investigate research opportunities which will benefit the Model Forest. Other members of the Research Board include; Canadian Forest Service, Daishowa-Marubeni International Ltd., Alberta Sustainable Resource Development, County of Northern Lights, and FPIInnovations.



Agroforestry and Woodlot Extension Society (AWES)

The WCFA entered into a working agreement with AWES to provide administrative support to the group, which focuses on providing extension services to woodlot owners. The program is sponsored under Alberta Agriculture and Rural Development and was formerly known as the Woodlot Extension Program (WEP).



County of Northern Lights

WCFA President, Juri Agapow presented to the County of Northern Lights council in June 2010 which resulted in the generous receipt of a grant of \$10,000 in support of the WCFA program. The funds are used as part of the core funding of the WCFA budget.



Town of Peace River - Grants to Groups program

Through the Grants to Groups program of the Town of Peace River, the WCFA was provided with \$7,500 to pay the Canadian Model Forest Network membership fee and to send two WCFA members to the Canadian Model Forest Network Annual General Meeting in Ottawa in October 2010.

Alberta Conservation Association

The WCFA met with Robb Stavne of ACA to discuss their Grouse Habitat initiative. The WCFA and ACA are planning to work together to develop trails and promote the Grouse Habitat program.

Peace Energy Co-operative

WCFA Director, Stan Jensen, attended the Peace Energy Co-op AGM in Dawson Creek, B.C. in June 2010. The PEC provides an example of a solid business case which has developed as a result of landowners coming together for an environmental, economic, and social benefit of the community.

Memberships/Affiliations

- Canadian Model Forest Network - member since September 2010
- International Model Forest Network - member since September 2010
- Peace Energy Co-operative - member
- Agroforestry and Woodlot Extension Society - member
- Alberta Forest Extension Network - member since October 2010
- Woodlot Association of Alberta - member
- Peace Valley Snow Riders Association - affiliation

Presentations

- Presentation to Grimshaw Chamber of Commerce - February 2010
- Presentation to the Rotary Clubs in Peace River and Grimshaw -
- Presentation to Northern Sunrise County - February 2010
- Presentation on the WCMF as part of the AFEX introduction before each AFEX event
- Hosted a booth at the Smoky River Trade Fair on March 19th in Falher
- Joined the Communications Collaboration Working Group in Forestry (CCWGF)
- Presentation to Town of Peace River- June 2010
- Presentation to County of Northern Lights - June 2010
- Presentation to the Assistant Deputy Minister, Sustainable Resource Development, Bruce Mayer - November 2010

FINANCIAL STATEMENT (April 1, 2009- March 31, 2010)

Balance Forward for 2009-2010	20,082.92
Petty Cash	94.82
Total balance forward	20,177.74
Revenue carry forward	8468.72
novaNAIT BRI - core funding	25,000.00
novaNAIT BRI - student funding	10,000.00
County of Northern Lights	10,000.00
Town of Peace River	7,500.00
Agroforestry and Woodlot Extension Society	5,745.20
Alberta Stewardship Award	250.00
Dinner ticket sales March 2010	100.00
Interest	3.12
Total Revenue	77,067.04
In-Kind Donations	
ASRD - office space	5000
Boreal Research Institute (Research Board)	25,000
FPInnovations	15000
ASRD - Owen Cook and Bonnie Hood	8,000
ASRD - maps, posters	1000
Alberta Agriculture - Doug Macaulay	5000
Woodmere Nursery	2500
DMI maps, gps, software	2500
Total In-Kind Donations	64,000
Disbursements	
Membership/business fees	5760.00
Student Expenses	9999.99
Administration	32,220.24
Reports/promotions	1233.38
Community Events	2070.15
Office supplies	2845.56
Equipment	2854.80
Total Disbursements	56,984.12

PROJECTED BUDGET (April 1, 2011- March 31, 2012)

Projected Budget for Phase IV 2011-2012	
Revenue carry forward from 2010-11	20,177
novaNAIT BRI - core funding	30,000
novaNAIT BRI - student funding	10,000
County of Northern Lights	10,000
Town of Peace River	7,500
Agroforestry and Woodlot Extension Society	5250
Event Revenue	500
CFS Climate Change Project	45,000
Total Revenue	128,427
In-Kind Donations	
ASRD - office space	5000
Boreal Research Institute (Research Board)	25,000
FPInnovations - Juri Agapow	15000
ASRD - Owen Cook and Bonnie Hood	8,000
ASRD - maps, posters	1000
Alberta Agriculture - Doug Macaulay	5000
Agri-Environment Services Branch	1000
Woodmere Nursery - trees	2500
DMI maps, gps, software	2500
Total In-Kind Donations	65,000
Estimated Expenditures	
Membership/business fees	7500
Student Expenses	10000
Administration	35000
Reports/promotions	1500
Trail Development	10,000
Carbon Credit Project	10,000
Climate Change Project	45,000
Community Events	2500
Equipment	3000
Office supplies	3000
Total Expenditures	127,500

WORK PLAN (April 1, 2011 – March 31, 2012)

Phase IV Work Plan (April 1, 2011- March 31, 2012)	Estimated Timeline	
	Start	End
Pursue project funding and support	May '11	March '12
Conduct 4th round of private land inventories	August '11	February '12
Participate in AFEX events	September '11	March '12
Tree planting initiatives	May 11	August '11
Provide administrative and project support to AWES	April '11	March '12
Establish educational opportunities with WOLF	October '11	March '12
Update and Re-publish Template and Guidebook	November '11	March '12
Attend CMFN AGM meeting	June '12	
Climate Change Project - pending	April '11	March '12
Carbon Credit Project - Brinkman and Associates - pending	April '11	October '16
Apply for awards & grants & support	April '11	January '12
Develop and implement research projects	September '11	March '12
Annual report, meeting and project evaluation (Phase IV)	May '11	
Community Outreach (demonstrations, activities, education)	Ongoing	
Report on progress to the community and key contacts	quarterly	

CONTACT INFORMATION

Juri Agapow, WCFA President
 Box 7466, Peace River, AB T8S 1S3
 780-624-4529 (office) 780-618-4700 (cell)

Lisa Ladd (Rybchuk), Gen. Manager
 Box 5195, Peace River, AB T8S 1R8
 (780)-624-6425 (office) (780)-617-4720 (cell)



 Printed copies of
 this document use only
 post-consumed, recycled,
 acid-free paper

Thank you!
Weberville Community Forest Association –
Board of Directors and Supporters